

### FEATURES & BENEFITS

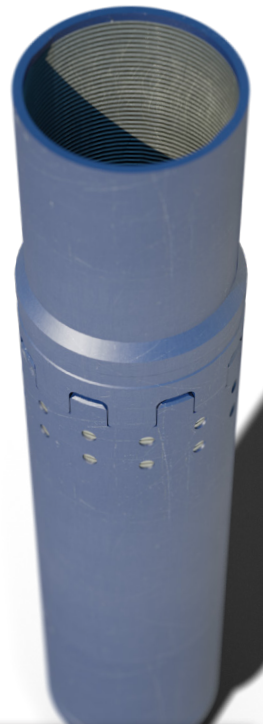
- Supports up to 10,000 ft-lbs torque.
- Shear at a tensile force up to 120,000 lbs (in 5000 lbs increments).
- Wide variety of shear settings
- Operates at temperatures up to 600°F and 3000 psi

## PRO-FRAC

### HiTorque Shear Sub

Built tough and designed to last, the HiTorque Shear Sub allows up to 10,000 ft-lbs of torque to be transferred through the sub. Featuring easy to configure shear values of up to 120,000 lbs, the Tuff Torque provides complete control over disconnect values.

Designed to perform in the harshest environments, the HiTorque is available for use in both thermal and non thermal environments, and will maintain seal integrity in temperatures up to 600°F.



DIMENSIONAL AND ENGINEERING DATA		OPERATING DATA	
Casing Size	4.5 in	Tensile Strength	Up to 120,000 lbs
Casing Weight	12.6#	Compression Strength	250,000 lbs
Maximum OD	5.5 in	Burst Pressure	3000 psi
Minimum ID	3.92 in	Temperature	600°F
Length Of Tool	2 ft	Torque	10,000 ft-lbs
Thread Size	4.5 in	Shear Value Per Pin	5,000 lbs +/-10%
Thread Type	4.5 in x 12.6# JFE Bear	Max Number of Pin	24 (120,000 lbs)
Thread Configuration	Box X Pin		

Copyright © Pro-Leading Energy Solutions  
 All rights reserved.